

## Installing Online Claiming with Optomate Premier

### What you will need before you start

- New Location disk supplied by HESA (Floppy or CD)
- New PIN or Location Passphrase

### Step A: Downloading the HIC Files

Visit <http://www.monkeysoftware.com.au/downloads.htm> to download the installation files.

These files are located in the **Optomate Premier Series** column, under Online Claiming 2.8.

Save the required files to your Windows desktop.

- PrepareHIC.exe (Existing Online Claiming 2.6 users only)
- HICOnlineFiles28.exe (all users)
- JavaInstall28.exe (new users only)
- OptomateFiles28.exe (all users)
- IKeyInstall28.exe (all users)
- PsiSetup.exe (all users)
- EVarSetup.exe (XP/2000 users Only)

### Step B: Installing Online Claiming 2.8

1. Only if you are CURRENTLY running Online Claiming 2.6, run the PrepareHIC.exe file. Once it has finished extracting, click the [Close] button.
2. Open 'HICOnlineFiles28.exe' and click Unzip. Once it has finished extracting, click the [Close] button.
3. If you are installing Online Claiming on to a new computer, double click the 'JavaInstall28.exe' and follow the defaults prompts to install Java.
4. Open the 'OptomateFiles28.exe' and click Unzip. Once it has finished extracting, click the [Close] button.
5. If you are currently using iKeys then you need to do the following:
  - ▶ Exit all programs.
  - ▶ Go to Windows **Start ▶ Control Panel**.
  - ▶ Click Add/Remove Programs.
  - ▶ Remove any Rainbow Technologies iKey Drivers.
  - ▶ Restart the computer.
  - ▶ Double click the 'IKeyInstall28.exe' and click the Unzip button. Once finished extracting the files click [Close].
  - ▶ Go into **My Computer** then **Local Disk C:**
  - ▶ Open the 'IKeyInstall' folder
  - ▶ Double Click the 'Setup.exe' program and follow the prompts.
  - ▶ Restart the computer.
6. Open Optomate Premier Series and go into: **File ▶ System Settings**, click on the **Online Claiming** heading and type in your Minor ID. Example: TOW00000. As long as you have a Minor ID entered into Optomate you will be prompted to 'Print Online Claiming DB4 Form'.

7. Set the Online Claiming Working directory to **C:\OptomatePremier\HICOnline** by clicking on the browse button.
8. Enter your Location Passphrase as supplied by HESA.
9. If you are using IKeys, tick 'I use IKeys'.
10. Save the changes you made, close out of system settings and exit Optomate Premier.

### **Step C (Part 1): Setting up the Environment Variables** **(For Windows XP/2000/Vista users only)**

If you are installing Online Claiming on Windows 98 go to Step C (Part 2) below.

1. Double click on the EVarSetup.exe file, then click on [Run] to proceed.
2. You will be prompted this is for XP users only – click [OK]
3. Reboot your computer then complete Step D.

### **Step C (Part 2): Setting up the Environment Variables** **(For Windows 98 users only)**

If you are installing Online Claiming on Windows XP/2000 go to Step 3 (Part 1) above.

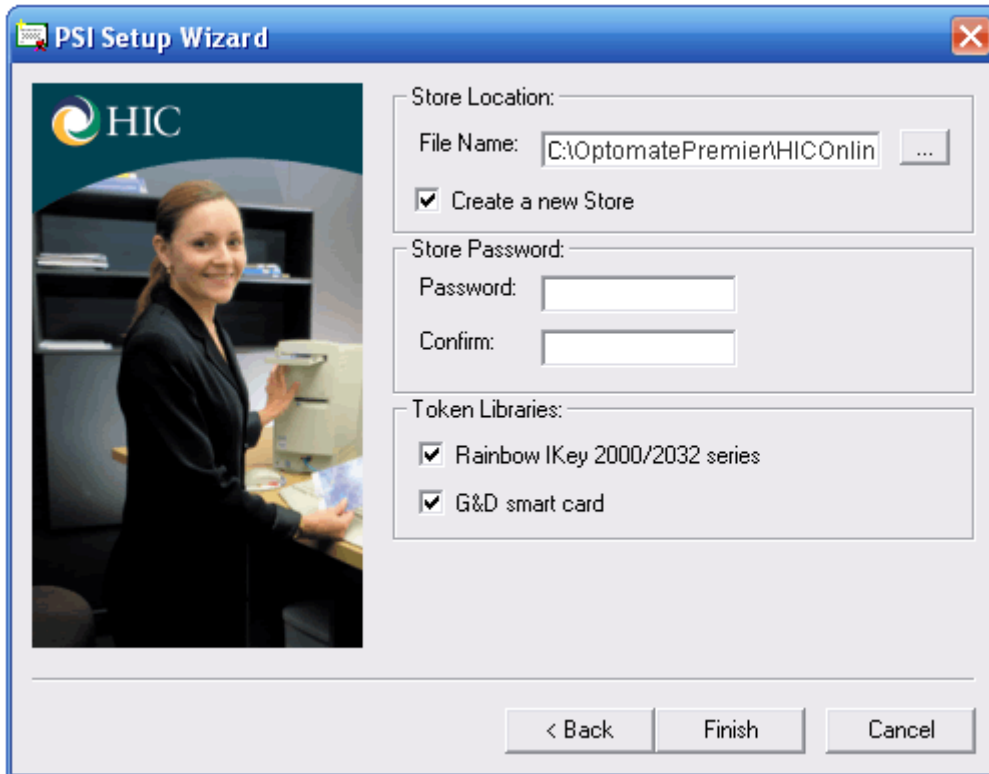
1. Go into 'My Computer' then 'Local Hard Disk (C:)'
  - ▶ Locate the 'autoexec.bat', right click and select 'Edit' (this should open the file in Windows Notepad).
  - ▶ Scroll to the end of the file and type the following, each on a new line:  
SET RUN\_DIR=C:\Program Files\HICOnline  
SET hicol\_lib\_path=%RUN\_DIR%\Lib\  
SET EASY\_API\_LOG=%RUN\_DIR%\Log\EASYDLL.TXT  
SET easy\_parm2=-Djava.library.path++C:\Program Files\HICOnline\Bin\  
SET easy\_parm1=-Dhiconline.logicpack.dir++C:\Program Files\HICOnline\LogicPack\
  - ▶ Save the changes by clicking on the 'File' menu and selecting 'Save'.
  - ▶ Close Windows Notepad.
2. Double click on the config.sys file and open with Windows Notepad
  - ▶ Scroll to the end of the file and type the following on a new line:  
SHELL=C:\COMMAND.COM /e:1024 /p
  - ▶ Save the changes by clicking on the 'File' menu and selecting 'Save'.
  - ▶ Close all windows, and Restart the computer.

### **Step D: Running the PSI Setup program**

Double click PSISetup.exe and click 'Next' to proceed.

1. Tick the 'Yes, I accept the agreement' option and click [Next]
2. Select the 'Do you have a diskette to load?' option and click [Next]
3. Insert the Location disk supplied by HESA (Floppy disk or CD)  
If you have a CD - you will need to browse for the location of the Encryption and Signing files:
  - Encryption** - click on the browse folder button [...] and select the CD/DVD Drive and select the file 'fac\_encrypt.P12'
  - Signing** - click on the browse folder button [...] and select the CD/DVD Drive and select the file 'file fac\_sign.P12'
4. Enter the in the P12 Pin password (Location Passphrase) and click [Next]

- To change the Store Location File Name click on the [...] button and browse into:  
**C:\OptomatePremier\HICOnline**.  
The file name should read: 'C:\OptomatePremier\HICOnline\hic.psi'
- Tick 'Create a new Store'



- Enter your Store Password (P12 PIN Location Passphrase) then re-enter to Confirm.
- Click [Finish] to complete the installation.
- Open Optomate Premier and go to:  
**File ► System Settings**  
Click on the Online Claiming heading.
- Enter your New Location Passphrase
- Set the Online Claiming Working Directory to:  
**C:\OptomatePremier\HICOnline**
- Save and Close System Settings.

This completes the installation of Online Claiming for **Location Only** users. If you have an **iKey** you will need to complete Step E below.

\* For further instructions with sending your first claim, read the **Online Claiming – Preparing & Processing Claims** help note which can be found at:  
<http://www.monkeysoftware.com.au/premierhelp.htm>

### **Step E: Running the PSI Setup program for iKeys** **(Ignore this step if you do not use an iKey)**

1. Double click 'PSISetup.exe'
2. Click [Next]
3. Check the 'Yes, I accept the agreement' option and click [Next]
4. Select the 'Do you have a Token To Register?' option and click [Next]
5. To change the Store Location File Name click on the [...] button and browse into:  
**C:\OptomatePremier\HICOnline.**  
The file name should read: 'C:\OptomatePremier\HICOnline\hic.psi'
6. Ensure 'Create a new store' is NOT ticked
7. Enter the in the Original Location Passphrase into the 'Password' field.
8. Insert the iKey when prompted and then enter the Individual Passphrase for that iKey.
9. You will be notified if the iKey was installed successfully.

\* Repeat Step E for each individual iKey.

## Step F: Proxy Connections

Some connections to the internet require a Proxy Username and password. If you do not know what your proxy settings are, you may need to contact your computer technician. You will need a Proxy name, port, username, and password.

Setting the Proxy Settings:

1. Open Optomate Premier
  - ▶ Go into: **File ▶ System Settings**
  - ▶ Click on the 'Online Claiming' heading
  - ▶ Tick 'I use a Proxy Server'
  - ▶ Enter the Proxy 'Username' and 'Password'
2. Right click 'My Computer' from the desktop or start menu and select 'Properties'
  - ▶ Click the 'Advanced' tab
  - ▶ Click the [Environment Variables] button.
  - ▶ Click the [New] button under System Variables at the base of the window/
  - ▶ Enter a new system variable with the following:  
**Variable Name:** easy\_parm3  
**Variable Value:** -Dhttp.proxyHost=<proxyname>  
Note: ('<proxyname>' is the name of the proxy e.g. webproxy)  
Click [OK]
  - ▶ Click [New] to create a second System Variable  
**Variable Name:** easy\_parm4  
**Variable Value:** -Dhttp.proxyPort=<port>  
Note: ('<port>' is the port number eg. '8080')  
Click [OK]
  - ▶ Restart the computer