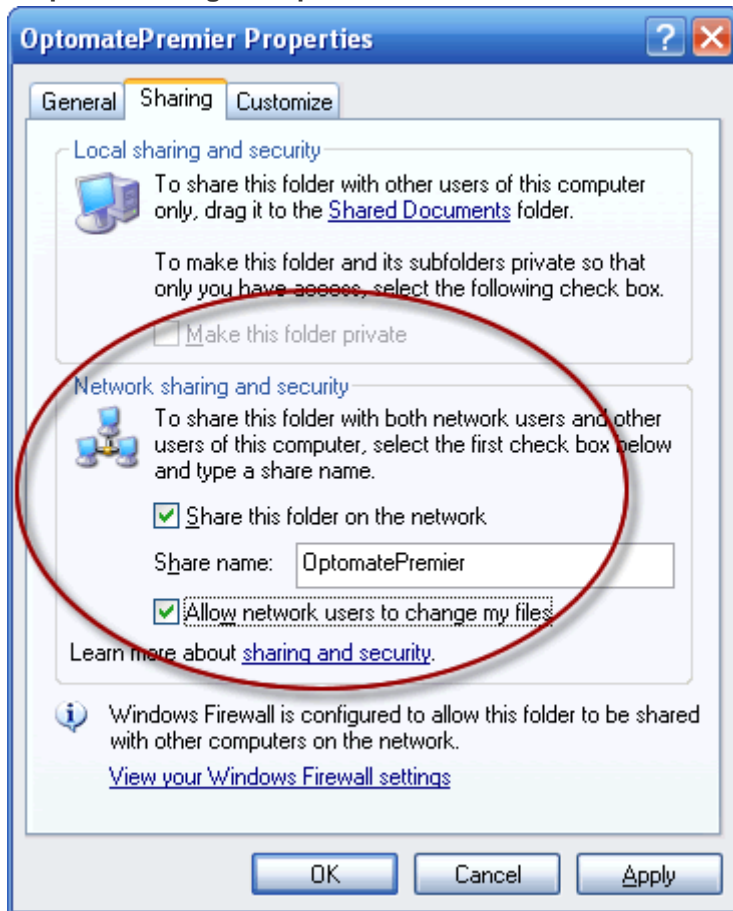


Installing Optomate Premier to a Network Workstation

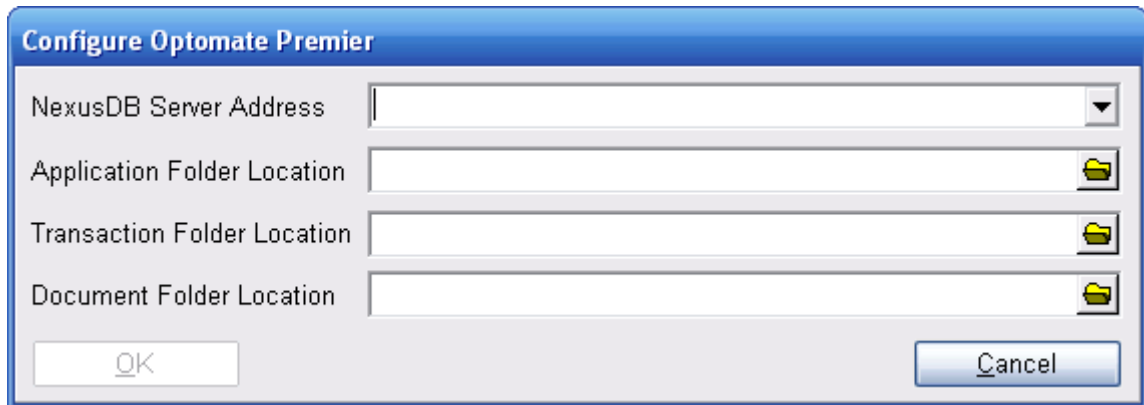
Step A – Sharing the Optomate Premier Data on Server



1. On the server, right click on the **OptomatePremier** folder and select **Sharing and Security**.
2. Click on the **Sharing** tab and as shown, tick:
 - Share this folder on the network**and
 - Allow network users to change my files**.
3. Click [Apply] then [OK].

Step B – Connecting the Workstation to the Server

1. On the Workstation, go into 'My Network Places' and search for the **OptomatePremier** folder on the server.
2. Locate the **configuser.exe** within this folder and double-click to run. The 'Configure Optomate Premier' window will open, as shown:



NexusDB Server Address – Drop down the combo box and choose the option relating to the Server computer name. For example, if your server name is “Server” this line would read: “NexusDB@Server”

Application Folder Location – Click on the browse button and choose the path to the Server ‘OptomatePremier’ folder. For example, if your server name is “Server” this line would read: “\\Server\OptomatePremier”

Transaction Folder Location – You must specify the location of the Transact folder for the workstation. All workstation must have a dedicated unique Transact folder. If the folder entered does not already exist it will be created for you. For Example, this line would read: “C:\OptomatePremier\Transact”

Documents Folder Location – This is the default folder that all machines will look to in order to find documents linked to patients and letter templates. For example, if your server name is “Server” this line would read: “\\Server\OptomatePremier\Documents”

Note: On a standard Local Area Network the transact folder will reside on each machine and must be set to **C:\OptomatePremier\Transact**.

For WAN Enterprise users the transact folders will all reside on the Server computer and must be set to:

C:\OptomatePremier\Transact\Server,
C:\OptomatePremier\Transact\Consulting1 etc...